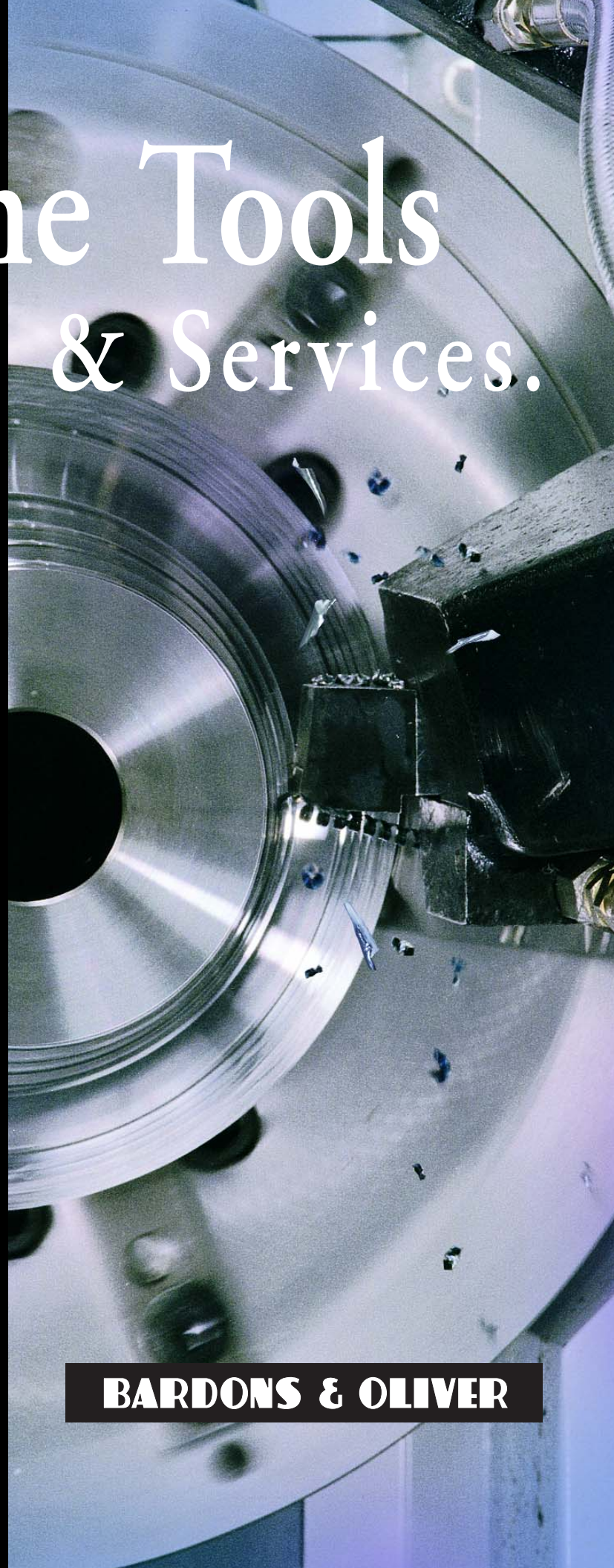
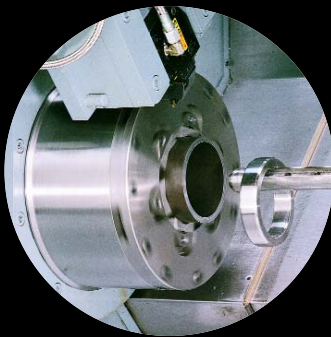


# Machine Tools & Services.



**BARDONS & OLIVER**

# Designed for Reliable Performance.

## Bardons & Oliver 36TBC CNC Lathes.

The 36TBC offers unmatched versatility for operations such as turning, boring, facing, threading, and cutting off tubing up to 6.8" OD and bar stock up to 3.00".

The TBC eliminates part handling between operations and cuts cost by performing a variety of operations that usually require several machines.



## Bardons & Oliver 34/36 Automatic Cut-Off Lathes.



Bardons & Oliver Cut-Off Lathes offer a wide variety of features that reduce set-up time and produce parts faster.

Models 34 and 36 Automatic Cut-Off Lathes chamfer, form, groove and cut off tubing up to 8" and bar stock up to 3" in one set-up.

## Special Machines and Material Handling Equipment.

Special machines include bar chamfer, end facing, secondary chamfering, cleaning and inspection stations.

Material handling includes magazine-type loading of bars or tubes from rack or bundle storage, automatic pick-off of short parts, or support and discharge of difficult longer parts.

Transfer of parts to secondary stations for additional machining, inspection or cleaning can also be included to offer complete part cells.



Bar Chamfer Machine with magazine loading.

# Engineered for Maximum Productivity.



## Bardons & Oliver SC CNC Turning Machines.

The SC line of CNC turning machines can handle workpiece diameters from 6.00" to 44.00". Big-bore spindles provide round bar capacities from 2.88" to 12.00" with spindle speeds up to 3,000 RPM. Twelve-station, interference-free turret and tooling systems allow maximum application flexibility. Heavy, rigid, cast-iron machine bases, with high-horsepower, spindle-drive systems, are uniquely suited for heavy metal removal as well as high-precision turning applications.

## Custom Engineered Solutions.

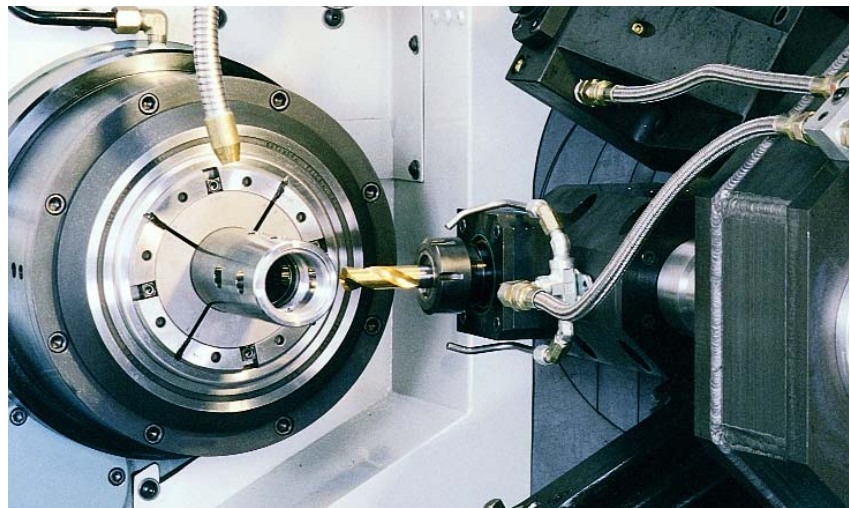
A highly experienced engineering staff takes the time to listen to customers and understand their application and production requirements.

Working with a broad range of industries including aerospace, automotive, fluid power, energy, oil field and power transmission, the designers can customize the standard B&O CNC turning machine product line to provide complete solutions. Custom-designed cells and systems result in superior cutting performance, proven repeatable process control, reduced set-up and cycle times and rugged, long-lasting reliability.



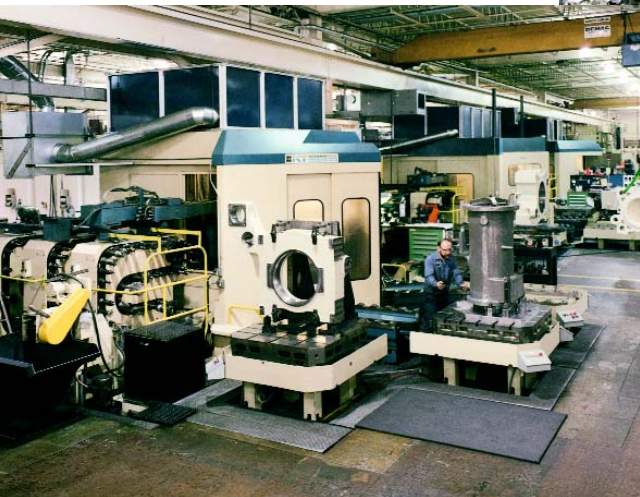
## Options.

Custom workholding, live tooling, automated material handling systems, tool and part gaging, custom guarding, special tooling and coolant management systems are available across the entire product line.



# Built for Lasting Accuracy.

Bardons & Oliver is located in a 100,000 square foot, state-of-the-art production facility in Solon, Ohio. As an ESOP company, our 120 skilled owners are dedicated to total quality, competitive prices and responsive customer service.



## Precision Machining Operations.

State-of-the-art manufacturing capabilities, such as multi-pallet shuttle machining centers, high-capacity automatic tool changers and CMM precision verification, are used to ensure the quality and reliability of every Bardons & Oliver product.

## BARDONS & OLIVER

110 years of excellence built into every machine.

### **Bardons & Oliver, Inc.**

5800 Harper Road • Solon, Ohio 44139

(440) 498-5800 • Fax: (440) 498-2001

Internet: [www.bardonsoliver.com](http://www.bardonsoliver.com)

E-Mail: [info@bardonsoliver.com](mailto:info@bardonsoliver.com)

© 1999, Bardons & Oliver, Inc.  
Catalog SB—1999—1

